

ET-600

EXAMINATION TABLE

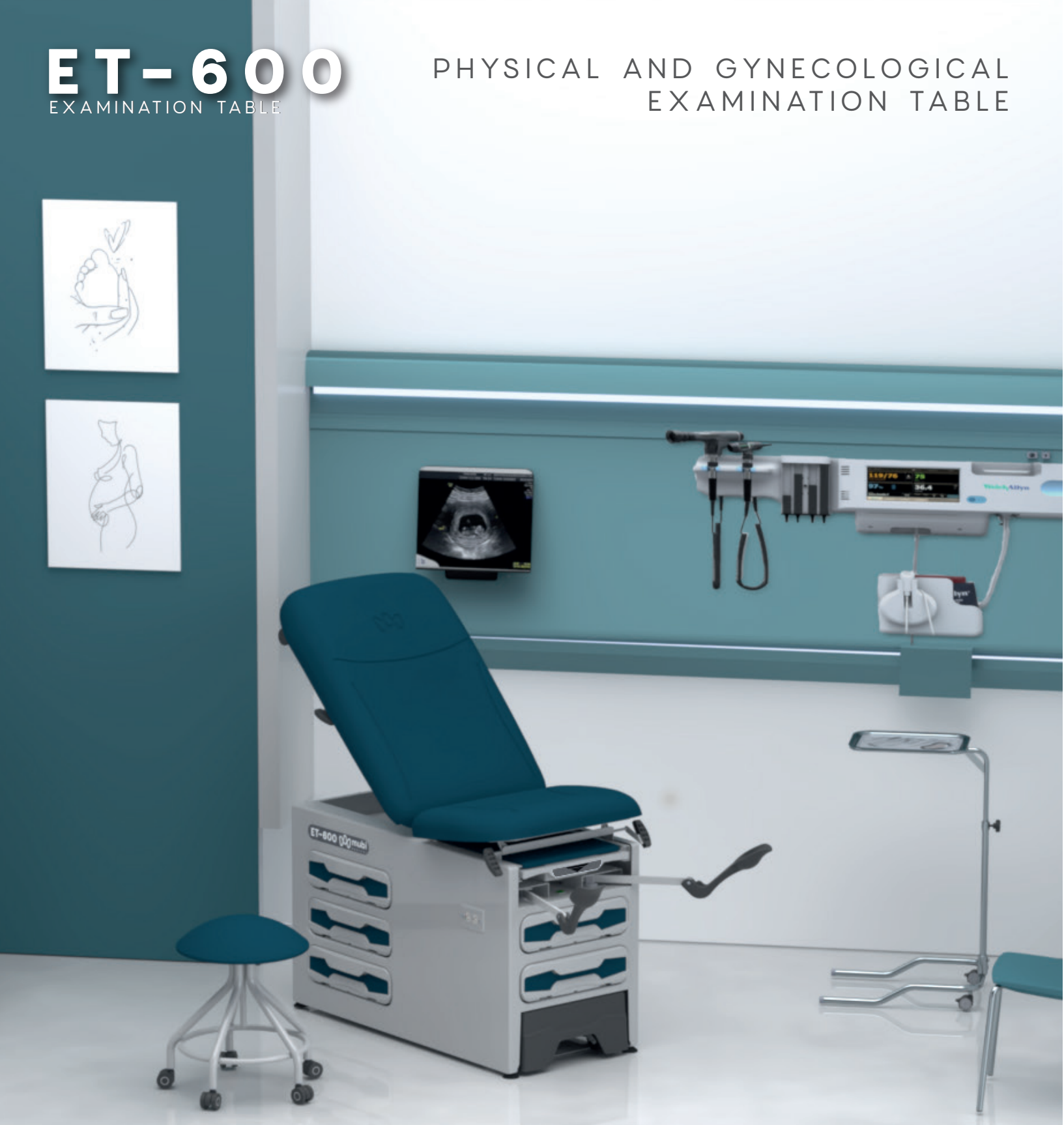


mubi
MEDICAL

ET-600

EXAMINATION TABLE

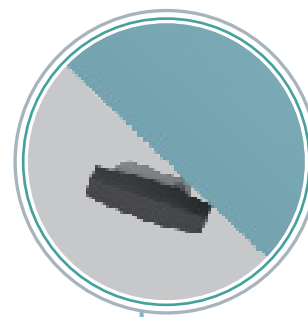
PHYSICAL AND GYNECOLOGICAL EXAMINATION TABLE



We present a solution designed to meet today's clinical demands, integrating the latest market trends, best practices in healthcare, and a comprehensive range of accessories. It offers ergonomics, comfort, and versatility, enabling the efficient and precise execution of various medical procedures. Its patient-centered design contributes to a more humanized and comfortable medical experience.

Auxiliary Tray

Provides additional storage space for a surgical drape roll beneath the backrest.



Backrest Positioning

Pneumatic gas spring-assisted adjustment mechanism.

Enhanced Storage Capacity

Includes two front drawers, each with a 15-liter capacity.

Bidirectional Drawers

Efficient access from both sides, providing flexibility to adjust workflow or room layout.



Dual Hospital-Grade Power Outlet

For connection of auxiliary medical devices.

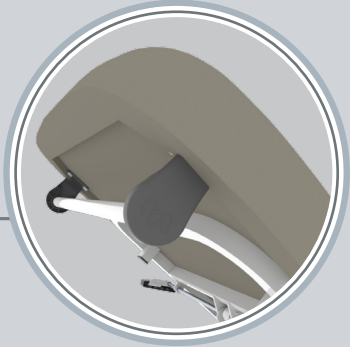
600 lb
BEST IN CLASS

ET-600
EXAMINATION TABLE



SAFE WORKING LOAD

Providing complete confidence and stability during every procedure, this solution is ideal for demanding clinical environments. It combines ergonomic design, patient comfort, and maximum durability.



Porta rollo
Soporte rollo de:
19.6 x 4.7 in (500 x 120 mm)
Para rollo de tela de:
7.8 in (200 mm)

Seamless Upholstery
Facilitates disinfection
while enhancing
patient comfort.



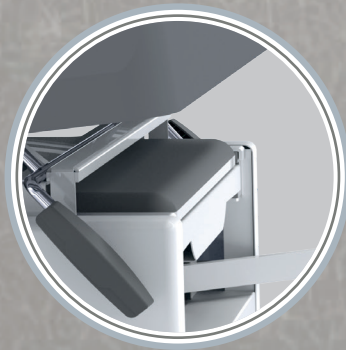
Retractable Lower Step
Provides safety
during patient entry
and exit.

Adjustable Backrest
Helps prevent the
patient from sliding
forward, providing
increased comfort.

Adjustable Non-Slip Levelers
Ensure uniform
stability across the
entire surface.

MULTIPLE CONFIGURATION
OPTIONS

Focused on mobility and safety
to meet your needs and budget.



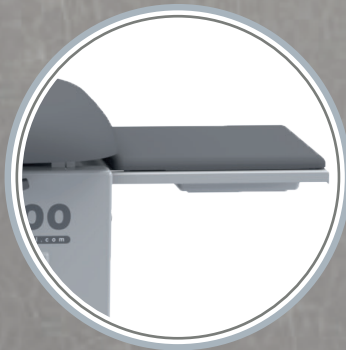
Pelvic Tilt (7°)

Improves
anatomical access
during pelvic area
examination.



**Ergonomic and
Adjustable Leg
Supports**

Allow up to 4
adjustable positions.



Foot Extension

Provides enhanced
comfort with an
easy-to-store
system.



**Fluid Collection
Basin**

Supports minor
procedures.
Capacity: 3 liters.



Instrument Warmer

Located in the first front
drawer. Equipped with
an activation button.
Maintains instruments at
a temperature of 96.8
°F (36°C).



ET-600

EXAMINATION TABLE



CUSTOMIZATION

Personalize your workspace with our range of upholstery and drawer accent colors. Choose from our standard color options for both the upholstery and the decorative drawer accents.



UPHOLSTERY COLOR OPTIONS

PRANNA®
Waterproof vinyl, easy to disinfect, resistant to abrasion and microorganisms.

STANDARD COLORS



GREY



BLACK

CUSTOM COLORS*



ALMOND



ROYAL BLUE



CARAMEL



SKY BLUE



ASH



HYDRANGEA



GRANATE



MEDIUM GRAY



MANDARIN



BROWN



PETROL



SAFARI



TAUPE



LIGHT GREEN*

*Additional charges apply. Request the full finishes guide.
*Color changes may affect lead time; please consult your account executive.
*A minimum order of 10 units is required for color changes.

ET-600

EXAMINATION TABLE



ET-600

EXAMINATION TABLE



STANDARD FEATURES

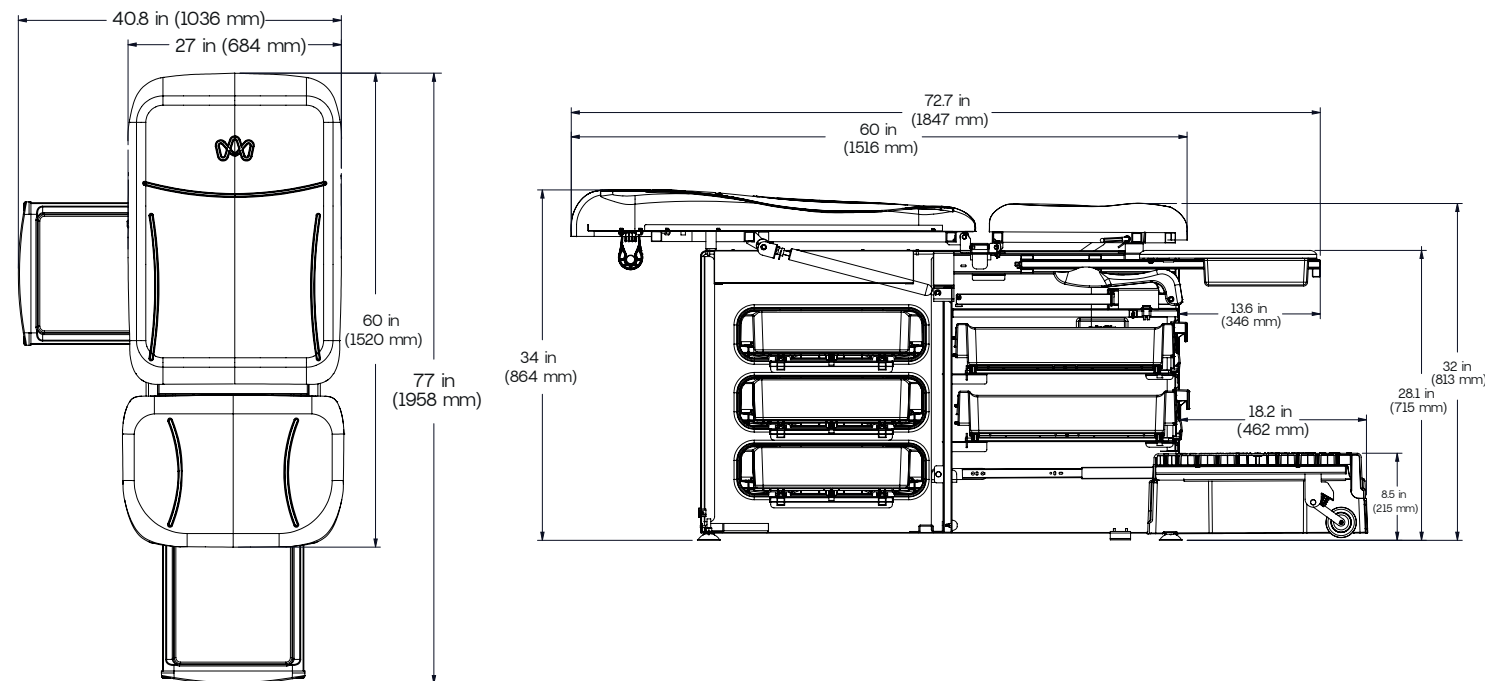
- Safe working load of 601.8 lbs (273 kg).
- Retractable scale with non-slip surface.
- Three bi-directional side drawers for storage.
- Two front drawers for storage.
- Retractable and adjustable leg supports (stirrups).
- Padded foot extension.
- Duplex electrical outlet for auxiliary devices.
- Auxiliary tray for storage beneath the backrest.
- Retractable fluid basin made of high-strength polymer.
- Paper roll holder support.
- Base with adjustable non-slip polymer levelers.
- Table structure finished with electrostatically applied polyester epoxy paint.

PACKAGING

- Closed crate Ref. 740-441.
- Cardboard box 7645 + Pallet 10196 + Upholstery Ref. 780-178.
- 20 FT container: 24 units.
- 40 FT container (STD/HC): 42 units.

ACCESSORIES

- Instrument warmer Ref. 780-223
- Stirrups Ref. 780-218



MOVEMENTS *

Backrest flexion (Pneumatic)	0° a 80°
Pelvic flexion (Mechanical)	7°

Units expressed in inches (in) and millimeters (mm). tolerances: angles $\pm 3^\circ$ dimensions ± 0.5 in (12.7 mm)

WE TRANSFORM SPACES,
WE IMPROVE LIVES.



Medellín – Colombia
Calle 2 # 50-185
(57) 604 285 2838

Cali – Colombia
Calle 18 # 118-85
(57) 602 489 6999



Fecha actualización: 25/08/2025